



MOMOYAMA GAKUIN UNIVERSITY (St. Andrew's University)



**INTERNATIONAL
EXCHANGE PROGRAM
FOR 2022**

CONTENTS

Introduction p.2

Exploring Osaka p.3

Facilities and Campus Map p.4

Four Seasons 四季 p.5

Campus Views p.6

Academic Calendar p.7

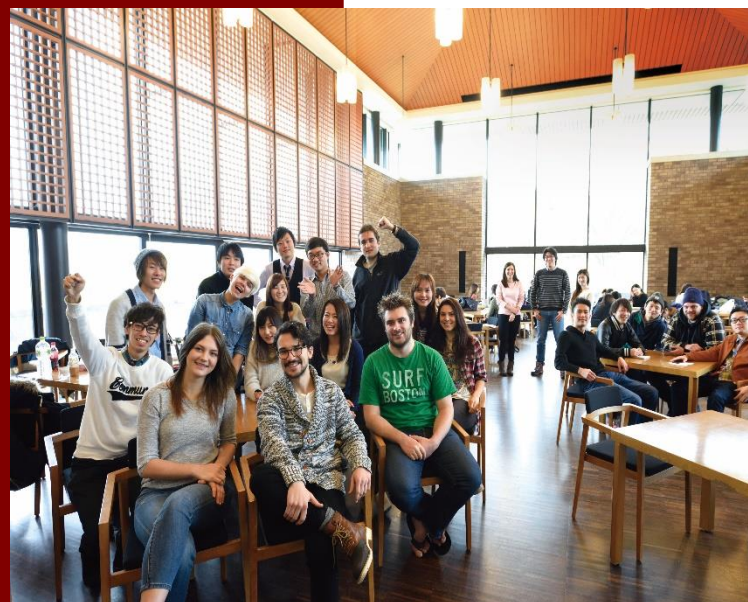
Academic Content p.8

International Center & St. John Hall p.9

- International Center
- Resident Assistant
- Buddy

Dormitory p.10

- Furniture
- Rent
- Internet
- Term of Tenancy
- Room Layout



MOMOYAMA GAKUIN UNIVERSITY

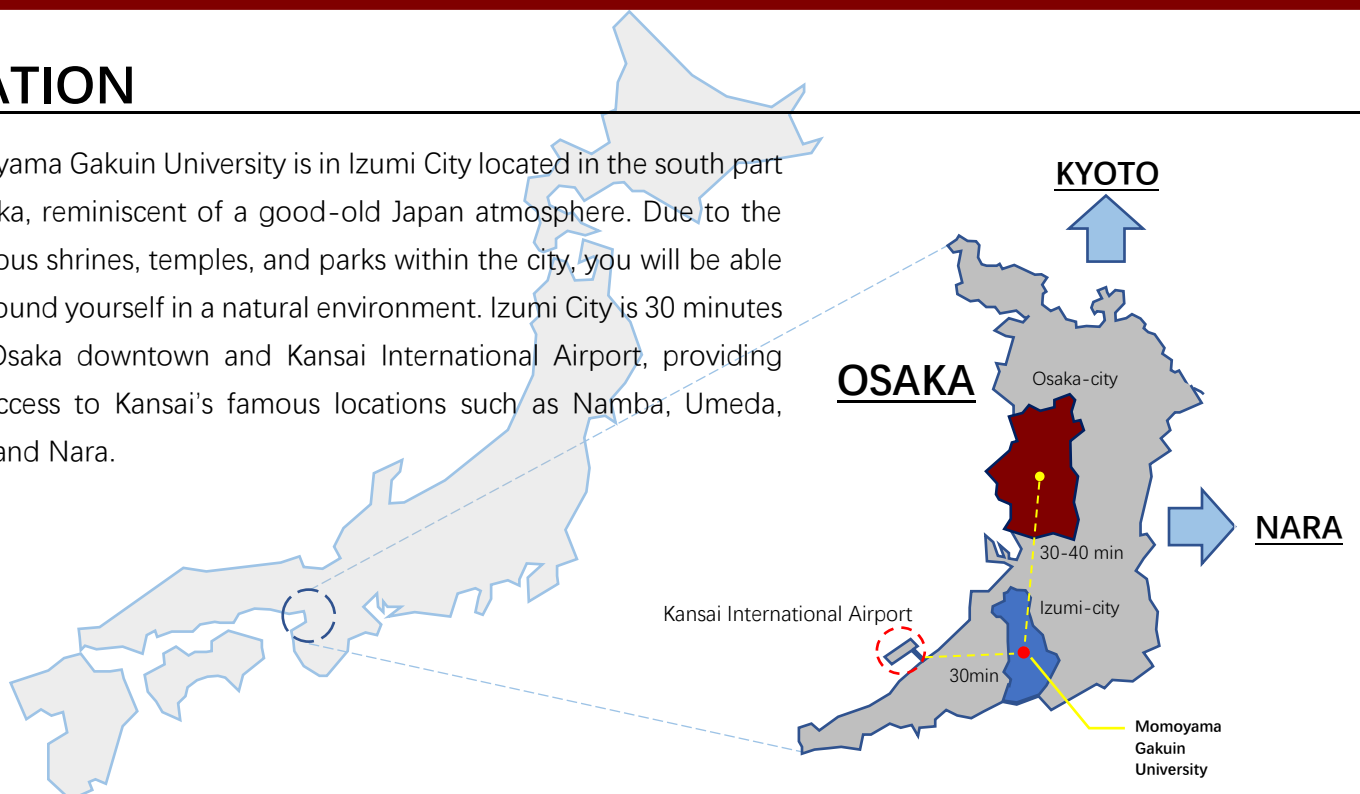


INTRODUCTION

Welcome to you from all of us at Momoyama Gakuin University. We hope that you will learn more about Japanese language, culture, and people during your exchange program. We would like to support you so that your days in Japan will be fruitful as well as memorable. Students, faculty members, and staff members of the university are eagerly waiting for you to join us. Before you begin your new life in Japan, please read this brochure thoroughly and carefully. You will probably have general ideas on what to expect in and around Momoyama Gakuin University. We will explain more details to you during the orientation week.

LOCATION

Momoyama Gakuin University is in Izumi City located in the south part of Osaka, reminiscent of a good-old Japan atmosphere. Due to the numerous shrines, temples, and parks within the city, you will be able to surround yourself in a natural environment. Izumi City is 30 minutes from Osaka downtown and Kansai International Airport, providing easy access to Kansai's famous locations such as Namba, Umeda, Kyoto and Nara.



EXPLORING OSAKA

Osaka is the second biggest city in Japan and located in Kansai region which is west of Japan. The population is approximately 8,800,000. Because Osaka is known as a commercial city, there is so much entertainment that attracts a lot of people.



Kansai International Airport



Momoyama Gakuin University



Momoyama is located in a quiet suburban area surrounded by quiet environment. It is always the best place to focus on your studies and researches.

Facilities and Campus Map



Classroom Buildings (No.1-3)

Classrooms, the Office for Audio-visual Materials and the Hi-Definition Theatre

St. Andrew Hall (No.4)
(Library)

Library and Faculty member's office

St. Thomas Hall (No.5)

Information Centre and Snack shop

St. Peter Hall (No.6)

The Educational Affairs Section, the Financial Affairs Section, the Student Affairs Section and the Health Care Room

St. Barnabas Hall (No.7)

A Co-op bookshop and the dining halls

Canterbury Hall (No.8)

The Auditorium and "Family Mart" convenience store

St. Margaret Hall (No.9)

A cafeteria and the dining hall

St. John Hall (No.10)

The International Centre, St. John Hall (serving as a community center for students), and a coffee shop

Gymnasium (No.11)

An indoor swimming pool and a training room
※You must attend our gym orientation session before using it.

St. Saviour Chapel (No.12)

St. Saviour Chapel is the symbol of Momoyama Gakuin University.

Four Seasons 四季

春 (Spring)

In March, it starts to get warmer little by little. From late March through April, it is the season of cherry blossom. In April and May, the climate is pleasant, and people go for picnics, hiking, and traveling. There are consecutive holidays called Golden Week (GW) in May.



夏 (Summer)

The rainy season usually lasts from mid-June through mid-July. In late July and August, it becomes hot both during the day and at the night. The humidity is also high. Most typhoons hit Japan between July and September.



秋 (Autumn)

Many say Autumn is the most comfortable season. Not too hot, and not too cold. During October and November, the weather is nice. It becomes chilly from mid-November, tree leaves turn into red, yellow, and brown colors.

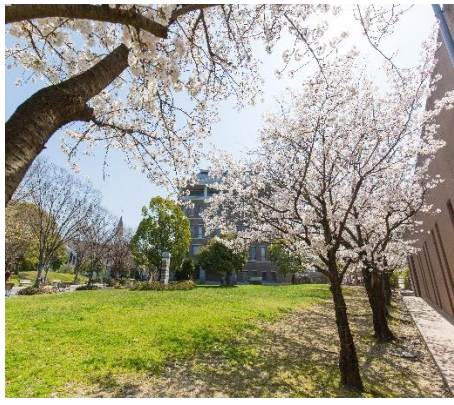


冬 (Winter)

In mid-December, it becomes cold. But in Osaka, snow is a rare sight. A New Year's Eve and New Year's is one of the most important Japanese events of the year. January and February are the coldest time of the year.



Campus views




With its beautiful natural surroundings, Momoyama is a great place to enjoy the changing seasons.



ACADEMIC CALENDAR (TBD)

 Spring semester

 Fall semester

- Classes begin
- Registration week
- The Anniversary of The Founding

April

4

October

10



May

5

November

11

- Campus Festival
- Remembrance Service Day



June

6

December

12

- Christmas Carol Service
- The last day of classes
- Winter break begins

- The last day of classes
- Final examinations begin

July

7

January

1

- Winter brake ends
- Classes resume
- The last day of classes
- Final examinations begin

- Summer break begin
- Make-up examinations

August

8

February

2

- Spring break begins
- Make-up examination

- Summer break ends
- Class begins
- Registration week

September

9

March

3



ACADEMIC CONTENT

Compulsory Japanese Language Course

The Japanese Language Course, (Level A: Beginner ⇒ Level D: Advanced), is compulsory for all exchange students. Your class will be decided based on a placement test.

Class schedule	Japanese I a • II a (Monday 3 rd and 4 th)	Japanese I b • II b (Thursday 3 rd and 4 th)	Japanese I c (Friday 1 st)	Japanese II c (Friday 2 nd)
Level A	compulsory	compulsory	compulsory	compulsory
Level B	compulsory	compulsory	elective	elective
Level C	compulsory	compulsory	elective	elective
Level D	compulsory	compulsory	elective	elective

Regular Courses

Basically, exchange students can take the courses of any faculty regardless of your faculty here. There are courses held in English as well. Provided below is the list of the courses for the 2021 academic year. There might be some restrictions on the number or language requirement. The courses are subject to change without notice.

Lecture Schedules for 2021	
Spring Semester	
■ Faculty of Economics	
Topics in Economics – Economic Affairs in Japan and Asia	
Topics in Economics-The Japanese Economy in the Postwar Period	
■ Faculty of Business Administration	
Topics in Business Management - Project-based learning and presentations led by business persons	
Topics on Management Studies-International Financial Reporting	
■ Faculty of International Studies and Liberal Arts	
Applied Linguistics Research	
Lecture on Special Topic-Miyazaki Hayao's World of Anime	
Lecture on Special Topic-Comparing Cultures from Around the World Japanese Studies	
Study of Comparative Cultures -Gender and Power: Behind the Scenes of History, East and West A, B	
Japanese Studies: Ecology through Animation	
Japanese Studies-Cultural History of Gardens in Japan	
Special Liberal Arts Course – Introduction to Contemporary Japanese Society	
Fall Semester	
■ Faculty of Economics	
Topics in Economics-Problems in Labor Economics	
Topics in Economics-Japan in the World Economy	
Topics in Economics-Statistical Analysis of The Present-Day Japanese Economy	
■ Faculty of Business Administration	
Topics in Business Management – Accounting and Globalization	
■ Faculty of International Studies and Liberal Arts	
② Japanese Studies – Human Language Study as Human Brain Study	
② Lecture on Special Topic-Miyazaki Hayao's World of Anime	
Japanese Studies: Ecology through Animation	
Special Liberal Arts Course – Japan's National Security	

International Center and St. John Hall



Supports for International Students

International Center

The office of International Center is located on the street level of St. John Hall Building. The center provides information and support for all international students. St. John Hall is a community center for faculty members and students. It is a great place to study if you want to make friends with Japanese students.

Resident Assistant

Residence assistants (RAs) are full-time Momoyama students who assist the international exchange students living away from their home town to lead safe and pleasant dormitory lives.

Buddy

The International Center will select a buddy for you. (Only for those who applied for the buddy program) She or he is a full-time student, and will support the daily life of international exchange students who have just come to Japan.



Dormitory



Resident assistants (Momoyama's Japanese students) are living in this Dormitory and they will be glad to give you advice about living in Japan.

Details

Furniture

- * Air conditioner,
- * Refrigerator,
- * Washing machine,
- * Single bed,
- * Bedding sets,
- * Microwave.

Rent

JPY240,000/semester

Internet

Included

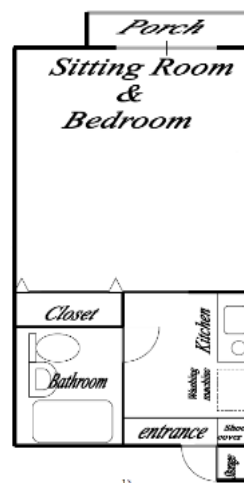
To Momoyama

Walking distance

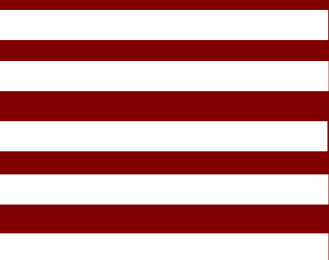
To the nearest station (Izumi Chuo Station)

Walking distance

Room layout



- *DO NOT make loud noise late at night. In particular, parties are strictly prohibited in the building.
- *You must pay the ENTIRE AMOUNT of rent (JPY240,000) at beginning of each semester. Payment is only acceptable in CASH.
- *Utilities (Gas, Electricity, and Water) are NOT included in the rent, and tenants must pay the bills on their own.
- *Internet fee is included in your semester fees.
- *If you arrive in late September or mid-March, a resident assistant can pick you up at Kansai International Airport and you can move into your flat on the first day.
- *The fees and schedule in this brochure are subject to change.





Momoyama Gakuin University (St. Andrew's University)

1-1 Manabino, Izumi, Osaka 594-1198, Japan

The International Center

Office Hours: 9:10 – 16:40 (Mon - Fri)

TEL: +81-(0)725-54-3131

FAX: +81-(0)725-54-3215

E-mail: inbound@andrew.ac.jp

URL: <https://www.andrew.ac.jp/english/>